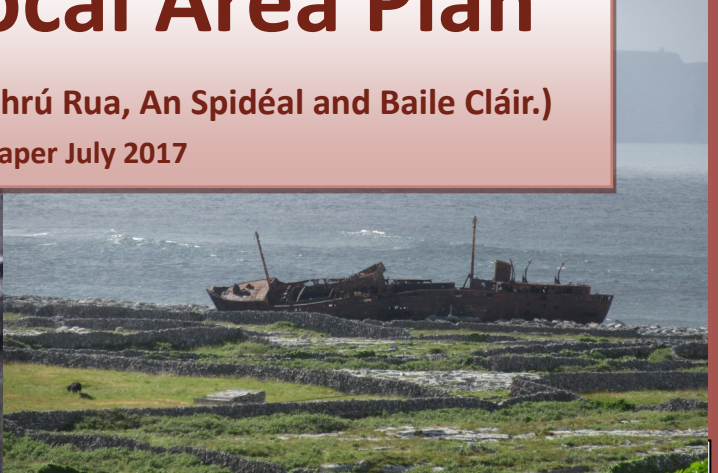




# Gaeltacht Local Area Plan

(Including settlements An Cheathrú Rua, An Spidéal and Baile Cláir.)

Issues Paper July 2017



Comhairle Chontae na Gaillimhe  
Galway County Council

## What is the Local Area Plan?

A Local Area Plan is a land-use plan which sets out the development strategy for an area within the lifetime of the plan. The plan contains an overall vision for the area and includes specific land use objectives to guide future development to achieve this vision.

The Local Area Plan establishes a framework for the planned, co-ordinated and sustainable development of an area with the aim to enhance and facilitate the balancing of economic, social and environmental needs/demands, in order to maintain and develop a high quality of life without compromising the protection of the environment and the needs of future generations.

There is a legal requirement in planning legislation to make, amend or revoke an existing plan, at least every six years. The most recent Gaeltacht Local Area Plan was adopted on 25th February 2008 & extended and amended on 25th March 2013, this plan is now up for review. Galway County Council now seeks to engage directly with local people in order to gain a full understanding of the future development aspirations for the Gaeltacht.

The issues that you raise will be used to inform the type of plan that should be incorporated into the

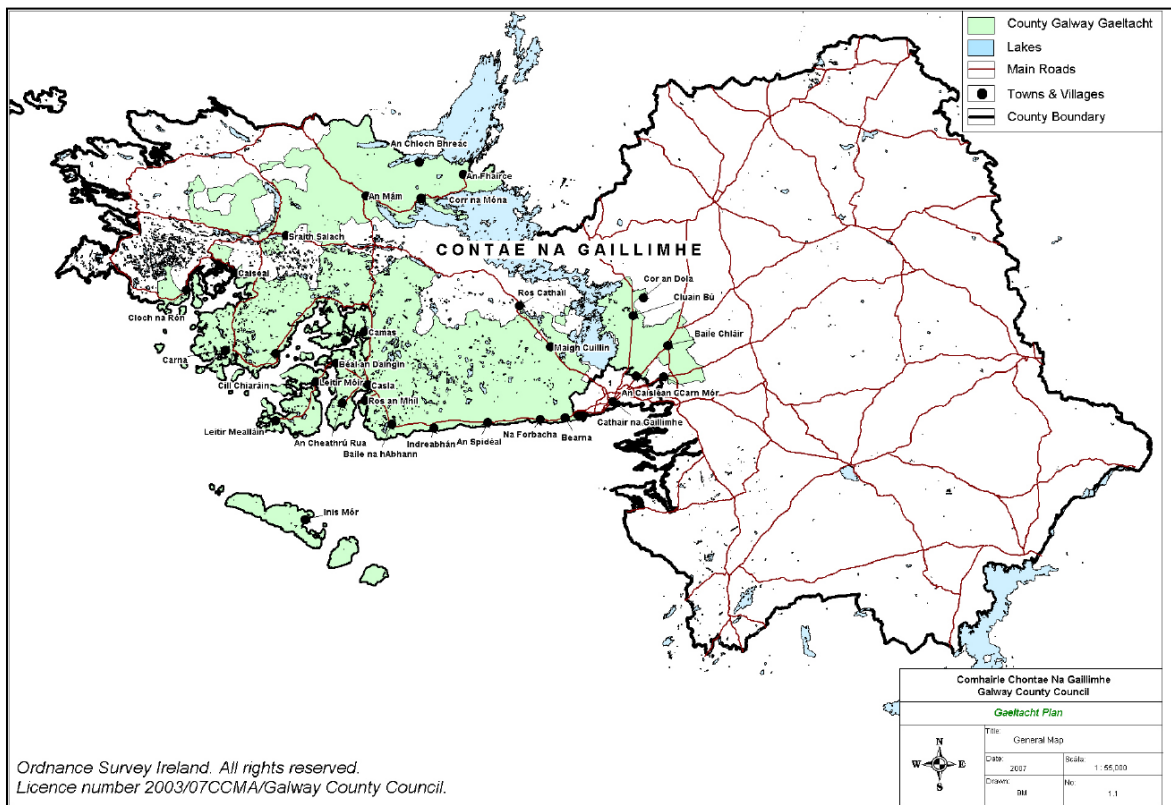
Development Plan. The new plan will incorporate settlements of An Cheathrú Rua, An Spidéal and Baile Cláir, Bearna will have a separate LAP as it is a census town with a population in excess of 1500 persons. The new Gaeltacht Local Area plan and Bearna Local Area Plan will be incorporated into the County Development plan by way of a Variation No2 (a) and (b), to ensure consistency with the adopted County Development plan.

## Purpose of the Issues Paper?

The purpose of this Issue Paper is intended to get you thinking about the type of planning considerations land-use issues that might be addressed in the new Gaeltacht Local Area Plan. The aim of this paper is to encourage you to make a submission about these issues, or any other planning matters you think are relevant and important in your local area and to get involved in the plan preparation process. We value local input and extensive local knowledge in order to create a cohesive vision for the future of the Gaeltacht area.

This Paper poses a series of questions under a number of themes to prompt ideas on the type of issues that the new plan should address. The issues raised in this document are intended as a guide only and are not exhaustive and we would greatly appreciate your views and comments in writing on these and other relevant issues.

Below: Map showing extent of Gaeltacht Area





## The Vision for the Gaeltacht Plan Area

The 2008/2013 Gaeltacht Local Area Plan sets a number of goals to represent the future vision of development and planning across the plan area. These are set out below:

- That Muintir na Gaeltachta can continue to exist and thrive as a distinctive cultural community with access to quality infrastructure and sustainable jobs and services.
- That the indigenous resources of the Gaeltacht be developed in a way that will benefit all of the community and have respect for the natural environment.
- That districts which have suffered population decline be assisted in encouraging new permanent residential growth.
- That the unique community of Oileáin Árann be assisted in preserving their island culture, having regard to the disadvantage of their location and to the challenge of mass tourism.
- That statutory and voluntary bodies be supported in serving the community in an inclusive and holistic manner.

The previous plan identified 6 districts to address specific issues effecting those areas, these are:

District A: Iorras Aithneach/Camas/Ros Muc

District B: Duiche Sheoigheach

District C: Ceantar na nOileán/An Crompán

District D: Cois Fharraige

District E: Oileáin Árann

District F: Imeall Na Cathrach/An Eachréidh

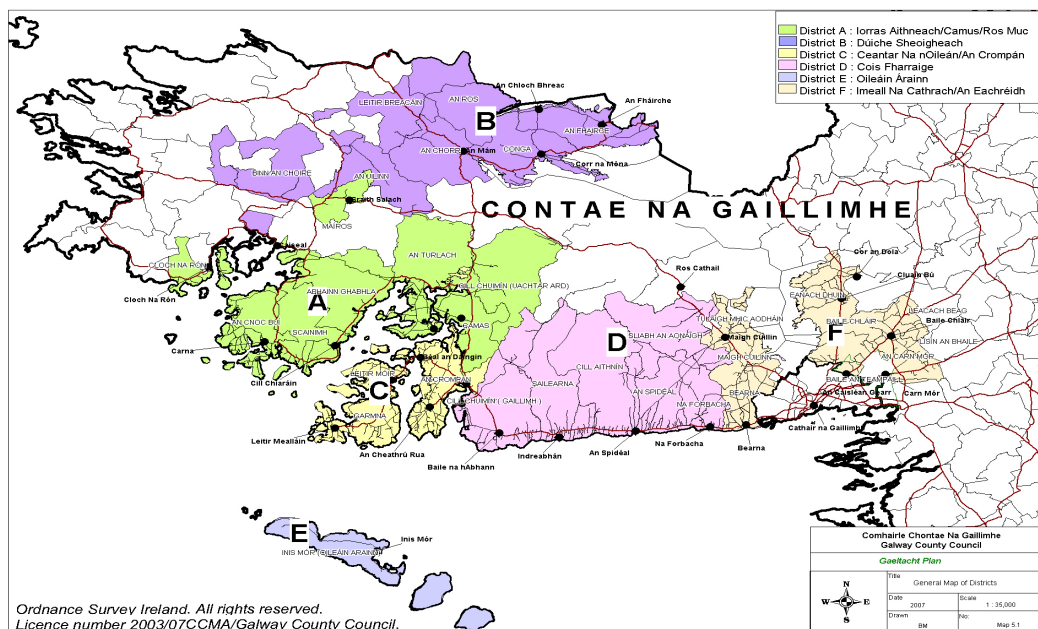
In addition to the districts, the Gaeltacht plan will have dedicated zoning maps for An Cheathrú Rua, An Spidéal and Baile Cláir.

The planning matters for consideration as part of this plan will be based around the following themes:

- Community, Heritage & Culture
- Housing
- Roads & Transportation
- Tourism & Economic Development
- Infrastructure services
- Natural and built Heritage & Conservation

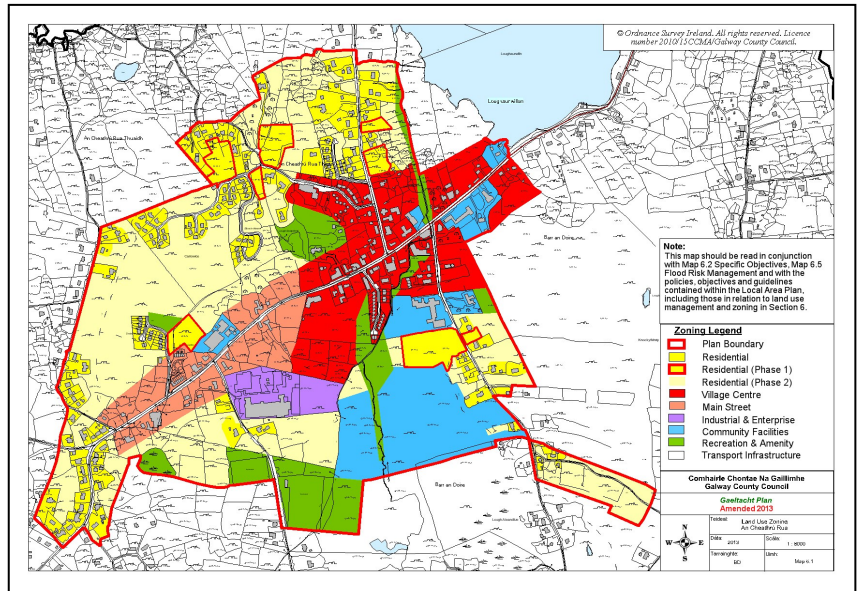
The Plan must be consistent with the Core Strategy and the objectives of the County Development Plan and may contain details of community facilities and amenities, and standards for the design of developments and structures. The Planning Authority must also consult with Statutory Authorities, local residents and interested parties in the plan area.

Extensive areas of Conamara have been designated Natural Heritage Areas under the Wildlife (Amendment) Act 2000. While other areas are designated as Special Areas of Conservation (SACs), including all candidate sites, and are protected under the EU Habitats Directive (Directive 92/43/EEC). The Gaeltacht also has Special Protection Areas (SPAs), that are designated and protected under the EU Birds (Directive 79/409/EEC) and Habitats Directives. The EU directives have been transposed into Irish Law by the European Communities (Natural Habitats) Regulations, 1997. In these areas the precautionary principle applies, in that development can only take place if there are no reasonable alternatives or that the project is demonstrably in the public interest.



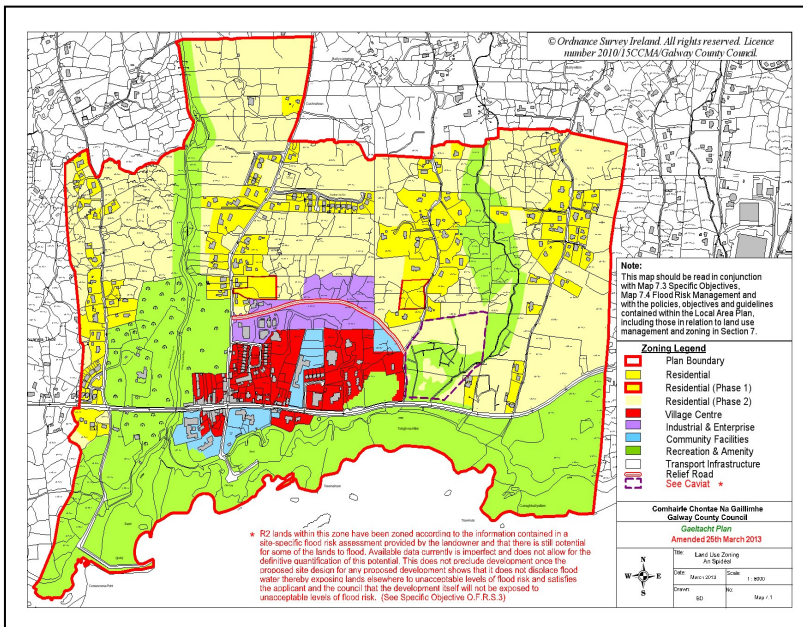
## An Cheathrú Rua-

An Cheathrú Rua is situated in the heart of Gaeltacht na Gaillimhe and is the principal settlement containing the range of public, commercial and community services that are necessary for the sustainable development of the west Conamara Gaeltacht. As shown, right is the adopted land zoning map for An Cheathrú Rua.



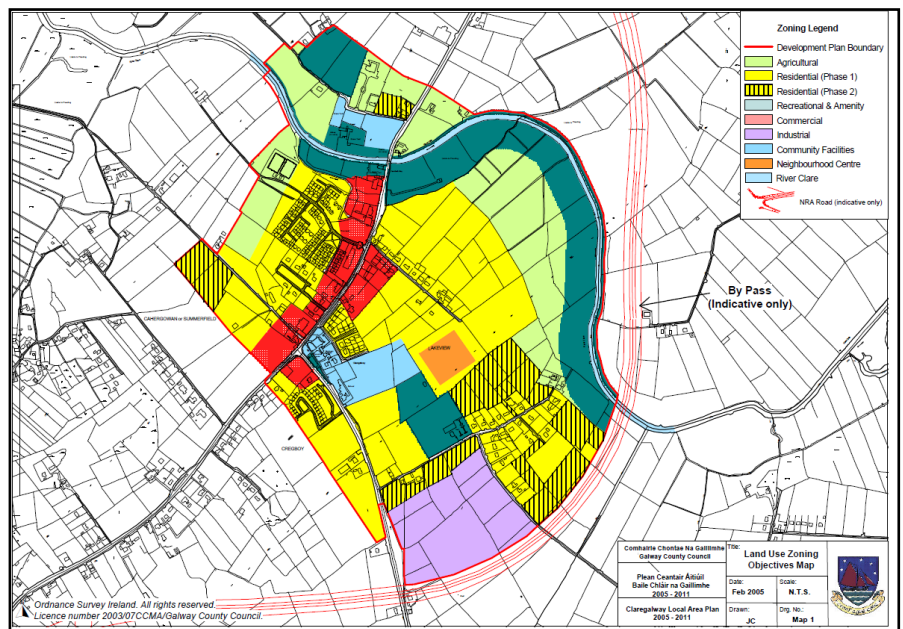
## An Spidéal-

An Spidéal lies some 18 kilometres west of Galway City in the Conamara Gaeltacht. Straddling the R336 regional route it is bounded to the north by a rugged landscape of blanket peat overlying granite bedrock and to the south by Galway Bay. The seaside location of the village, its amenities, its culture and its proximity to the City makes it an attractive tourism venue as evidenced by the annual growth of summer visitors. Shown on the left, is the current zoning plan for An Spidéal.



## Baile Chláir-

Claregalway is located approximately 10 kilometres northeast of Galway city, within the County Galway Gaeltacht. The village is situated where the N17 Galway to Sligo (Collooney) National Primary Route crosses the River Clare. It is also on the junction with the N18, Galway to Limerick National Primary route, which links onto the N6 Galway to Dublin, National Primary route and the N18. The town has experience a large growth in housing development in recent years coming under pressure from Galway City commuters. Right is the 2005 zoning map for Baile Chláir.



## Community, Heritage & Culture

The current LAP protects and promotes the Irish language as the primary cultural expression of the community.

**Q How can the Local Area Plan protect the linguistic and cultural heritage of the Gaeltacht and promote Irish as the community language?**

**Q What local amenities/facilities are not well represented within your local community, i.e. greenspace, playgrounds, playing pitches?**

## Housing

The current LAP promotes a housing supply to meet the varied needs of the community is necessary for an acceptable standard of living. It must be provided in a sustainable manner, so as to have regard for the provisions of the Core Strategy of the County Development Plan, the natural environment and established settlement patterns.

**Q Do you believe there is adequately zoned housing land in the settlement zoning plans ?**

**Q What are the priorities for housing in the settlements, in terms of size & type of housing ?**

## Roads & Transportation

The Roads and Transportation Strategy in the current LAP seeks to ensure the provision of a safe and convenient road and pedestrian movement network that caters for the existing and future orderly and sustainable expansion of the area within the lifetime of the plan.

**Q How can the Local Area Plan help to improve and promote sustainable forms of transport in the Gaeltacht?**

**Q Are there areas which would benefit from improved or enhanced cycling/walking facilities?**

## Tourism & Economic Development

It is the aim of the Planning Authority through the objectives of the existing local area plan to facilitate the provision of jobs and services, in partnership with Údarás na Gaeltachta, having particular regard to culture, tourism, community services and education.

**Q How can the Local Area Plan support the development of cultural tourism?**

**Q Is the sufficiently zoned industrial/economic/business land in the current zoning plans and how can the Local Area Plan promote economic development within the Gaeltacht?**

## Infrastructure services

The current LAP seeks to optimise every opportunity for continual improvements that are required to water and waste water services .

**Q How can the Local Area Plan promote & support effective drainage solutions and improve water capacity issues in the Gaeltacht?**

**Q Are there areas you know of which are particularly prone to localised flooding?**

## Natural & Built Heritage & Conservation

The current LAP promotes the appreciation of buildings and places which because of their intrinsic quality and style or because of their historical significance are of local importance.

It also required all development should have regard to the natural and built environment in which it takes place, in particular to EU, National and County Development Plan designations.

**Q Are there any historic buildings within the Local Area Plan area which are not already on the protected structure list that merit inclusion?**

**Q How can the Local Area Plan best promote the conservation and enhancement of the build heritage of the Gaeltacht?**

**Q How can the Local Area Plan best support the protection, conservation and enhancement of natural heritage and biodiversity?**



If you are interested in any of the issues in this booklet or have any other ideas to be considered in the preparation of the Gaeltacht Local Area Plan 2017, you are Invited to Have Your Say, before Tuesday 8th of August 2017 (5pm), in one of the following ways:

- A) Write to: Forward Planning, Planning Department, Galway County Council, County Hall, Prospect Hill, Galway City.
- B) Email: [forwardplanning@galwaycoco.ie](mailto:forwardplanning@galwaycoco.ie)
- C) Come to the Public Information Day

An Ceathrú Rua, Library	20th July	3pm –5pm
Park Lodge Hotel, An Spidéal	20th July	6pm– 7.30pm
The Arches Hotel Claregalway	25th July	3pm-7.30pm

**Last Day for Submissions is the 8th of August 2017**